

A SENSAPHONE REMOTE MONITORING & CONTROL SYSTEM

SENSAPHONE® 2000

- **MONITORING**
unattended equipment
& sites
- **DATA LOGGING**
up to 32,000 records
- **COMMUNICATIONS**
by phone, fax, pager,
e-mail, or computer



SENSAPHONE
HOW DID YOU MANAGE WITHOUT IT?

SENSAPHONE® 2000

**SENSAPHONE 2000 COMBINES
ADVANCED REMOTE MONITORING
WITH THE MOST FLEXIBLE
DIALOUT CAPABILITIES**

**A CRITICAL TOOL THAT KEEPS YOU
INFORMED ABOUT YOUR PROCESS
EQUIPMENT 24 HOURS A DAY**

Each Sensaphone 2000 can monitor and report on up to 8 remote, analog or digital inputs; and it can send those reports to as many as 32 locations. The information it collects is organized into easy-to-read reports and delivered wherever you want it, whenever you need it. Sensaphone 2000 saves you valuable time and keeps you aware of important functions and activities.

An essential tool for environmental monitoring in a variety of applications, Sensaphone 2000 supplies the critical information needed to prevent costly problems and maintain peak performance at virtually any kind of industrial facility.

If you need to know, you need Sensaphone 2000!

MONITORS 8 DIGITAL OR ANALOG INPUTS

Sensaphone 2000 allows you to select up to 8 inputs—digital or analog—to monitor conditions such as room temperature, outside temperature, power supply, humidity, tank levels, tank temperature, pressure, flow rates, flooding, HVAC controllers, etc. When there's a problem, it alerts you immediately. Whatever you need to know, Sensaphone 2000 can tell you.

You can program ranges to suit your specific monitoring requirements, and all programming can be done locally or from virtually any remote location. Digital functions include open/closed dry contact input and/or pulse counting. Analog can be read as a percentage or via a user-defined lookup table.

COMMUNICATES WITH UP TO 32 PRESELECTED DESTINATIONS

The Sensaphone 2000 Remote Monitoring System offers an amazing array of communication options. Using voice messages you record, it calls and reports to as many as 32 different phone numbers; and it selects different num-

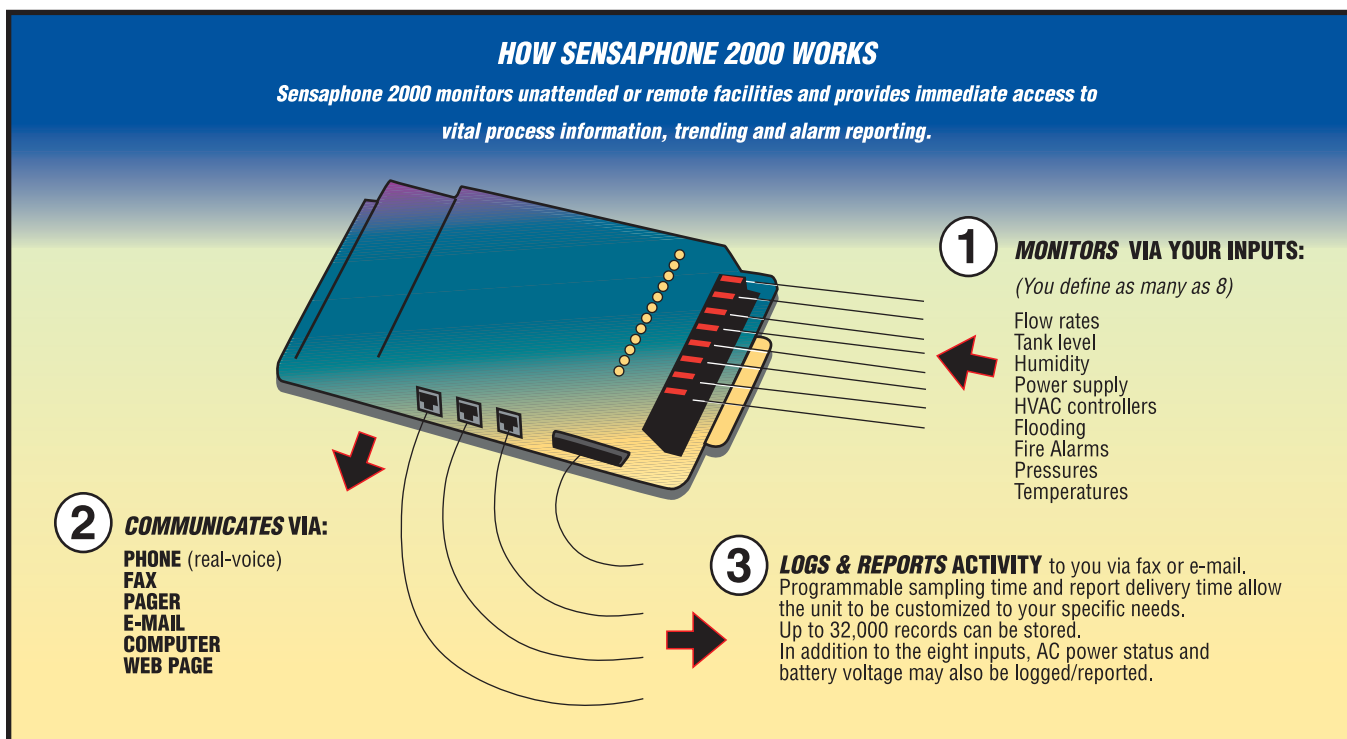
bers to call based on a schedule you create. It can send alarm information directly to your PC. If the programmed phone number is a fax, it will compose and send a fax report. To pagers and beepers it sends the appropriate alarm information. When used in combination with the Manager 2000 software program, the Sensaphone 2000 is also sophisticated and versatile enough to send messages to e-mail addresses, or to assemble report data into a web page, which it then posts to your web site.

Use Sensaphone 2000's various methods of communication to send regular reports and/or transmit alarm messages. The system's versatility makes it quick and easy to reach the right people, and that's especially important in an emergency.

Sensaphone 2000 can easily be programmed to send the preselected information or alarm messages to whatever destination you choose.

IMMEDIATE ACCESS TO VITAL PROCESS INFORMATION

All it takes is a phone call to receive a voice status report or a data connection for more detailed information. You can



check on any site and access critical information at any time from anywhere. The knowledge you need is always just a phone call away.

BUILT-IN DATA LOGGER

With its internal data logging features, Sensaphone 2000 allows you to log activity such as trends, usage and other factors. It can store as many as 32,000 time-stamped records for verifying activity and charting trends over long periods.

All data is stored in the system's nonvolatile memory, protecting data even during loss of both AC and battery power.

BACKED BY ALL THE SUPPORT AND EXPERTISE OF SENSAPHONE, INC.

Sensaphone, Inc. is a pioneer in the design and manufacture of remote monitoring systems. We continue to be at the forefront, setting industry standards for technical innovation.

With an installed base of more than 200,000 Sensaphone products—from small models to sophisticated industrial systems—Phonetics prides itself on providing flexibility and features at an affordable price.

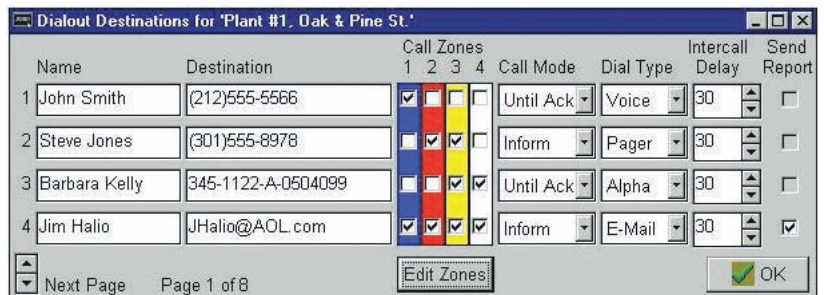
Your Sensaphone 2000 comes with responsive technical support and a comprehensive warranty.

Contact the Sensaphone Sales Department for further details at (610) 558-2700, or visit our website at www.sensaphone.com

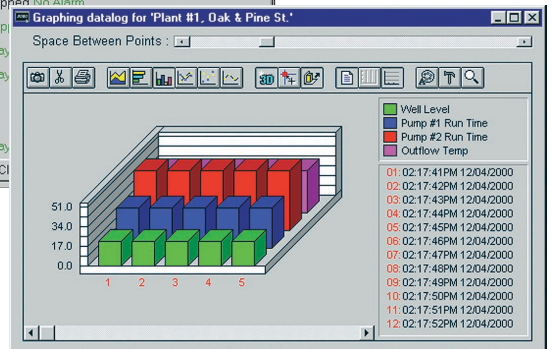
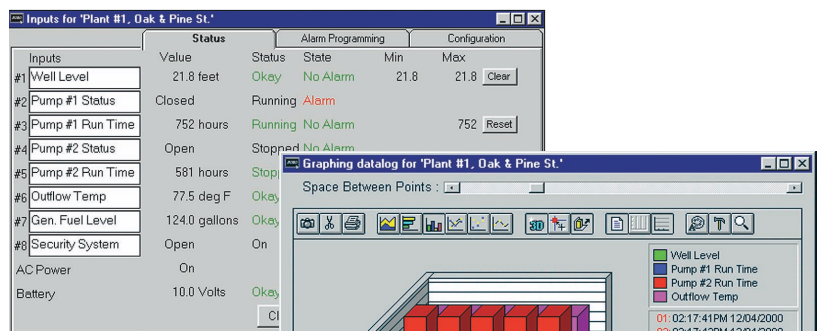
INCLUDES FREE MICROSOFT WINDOWS™ COMPATIBLE SOFTWARE

State-of-the-art, user-friendly software makes the Sensaphone 2000 easy to program and easy to use, from any local or remote PC. Use this flexible software to view input activity in real time, to analyze and graph stored data, and even to process incoming alarms. The software, which is compatible with Windows 3.1, 95, 98, ME, NT, and 2000, includes these important features:

- Easy point-and-click programming.
- Real-time graphics screen.
- Wide range of report options, generated at times you've specified.
- Allows you to create Web pages that update at scheduled times.
- Allows you to view data log information in a grid, or plot it using 3D charts and graphs.
- Lets you maintain multiple Sensaphone 2000 units to a centralized PC.
- Enables you to receive and process alarms from multiple units.
- Automatic Web Page generation.

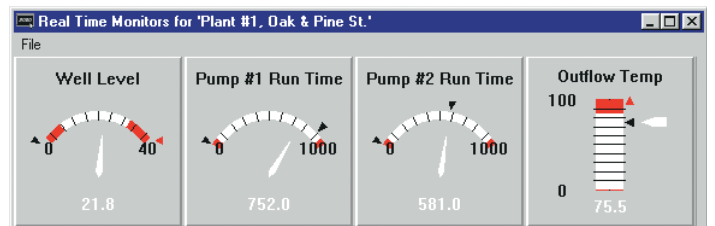


Choose any combination of communication methods for Sensaphone 2000 to send its reports or alarm messages.



You choose the formats in which you want to see real-time or stored data displayed.

Colorful charts, gauges, graphs and web pages bring the data to life.



SENSAPHONE[®] 2000



SPECIFICATIONS

Dialing Parameters:

Programmable call list for each input
Alarm acknowledgment:
touch tones, callback, or modem
Call progress monitoring:
detect dial tone, busy signals & ringback
Programmable time between calls:
10 seconds to 60 minutes

Destinations:

32 destinations
36-digit telephone numbers
64 character E-mail addresses

Inputs:

8 Universal Inputs & 1 AC Power:
Normally Open/Normally Closed
dry contact
2.8K/10K thermistor
4-20mA current loop,
or 0-5V analog voltage
10 bit resolution

Communication Types:

Voice, fax, modem, E-mail, numeric pager,
alphanumeric pager, web page
Speech technology:
User-recordable voice for eight input alarm
messages and one ID message

Data Logging:

Up to 32,000 samples (all samples
include one data and time)
1 second to 200 hour sampling rate
User programmable channel selection—
inputs 1-8
AC power & Ni-Cad battery backup

Communication Ports:

RS232 programming port
Used for local programming & setup
DB25 female DCE
38,400 bps

Built-in Data Modem:

Data throughput 14,400 bps
14,400 bps Fax
Protocols: V.32bis, V.32, V.22bis,
V.22A/B, V.23, V.21, Bell 212A & 103

Local Indicators:

Inputs 1-8 Alarm Status LEDs
System On LED
Power Alarm LED
Phone LED
Battery OK LED

Power Requirements:

External transformer 120VAC
60Hz 10W (UL-listed power supply)
(6) C-cell Rechargeable Ni-Cad
batteries (not included)
10 hour battery backup

Operating Temperature Range:

0-50° C (32-122° F)

Humidity:

0-90% RH, non-condensing

Size:

12.1"w x 7.2"h x 1.6"d

Shipping Weight:

3 lbs.

Specifications subject to change without notice.

Sensaphone is a registered trademark of Phonetics, Inc.

SENSAPHONE, INC.

901 Tryens Road Aston, PA 19014 Phone 610.558.2700 Fax 610.558.0222 www.sensaphone.com